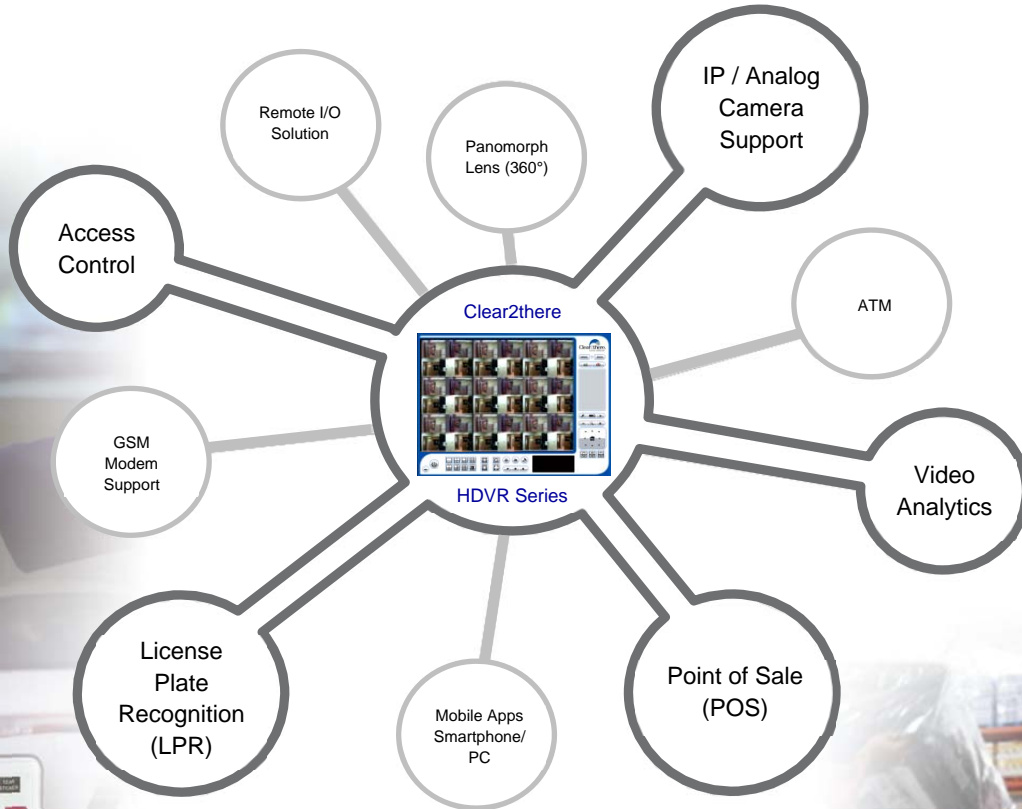


# Clear2there HDVR Metadata Integration

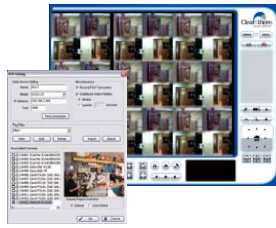


## Metadata Application Main Features

- Support for all HDVR NVR/DVR/NVDR system
- Up to 64 POS, LPR, Access control system
- Transaction data overlay on multi-channels
- Recording transaction data
- Smart detect and immediate reaction of pre-defined special keyword of abnormal transaction
- External rule of user defined event – develop with POS, LPR, Access control alarm SDK
- POS, LPR, Access control event log search for pre-defined event
- Search for specific keyword and playback recorded video with transaction data
- SQLite format database of transaction data

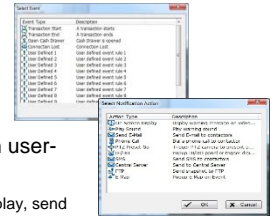
### Third Party Compatibility

- Connect up to 64 POS/LPR/Access Control Devices per DVR/NVR
- Compatible with any ASCII through RS232 serial or TCP/IP interface
- License management



### Event Notification

- Smart detection of events
  - Transaction start/stop
  - Open register
  - Connection lost
  - Up to 10 user defined events
- Alarm notification based on user-defined events
  - Most popular (On screen display, send email/SMS, upload to FTP, popup E-map)
  - Other options (Play sound, phone call, PTZ preset go, signal digital output)



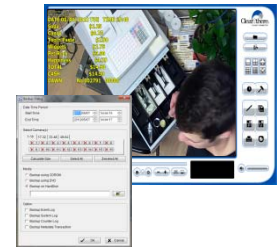
### LiveView

- Up to 64 cameras/devices
- Synchronized transaction data with video
- Overlay data on multiple channels
- Remote view live video with transaction data overlay



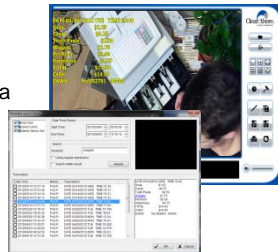
### Recording & Backup

- Start recording when event log detected, continuous or based on motion detection
- Local or remote backup video with transaction data overlay



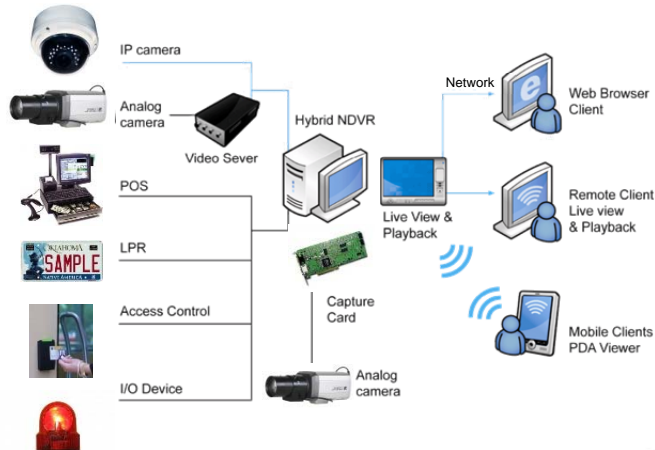
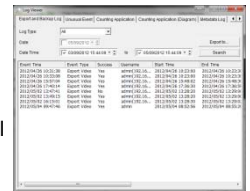
### Smart Search & Playback

- Local or remote smart search transaction data via user defined keywords, date, time, numeric value...etc.
- Playback recorded video with transaction data



### Data Management

- Store all transaction data in SQLite format for retroactive analysis
- Export event log data to Excel
- User defined OSD settings
- Dedicated storage for data



### C2THDVRPOS – RS232 to TCP/IP



Input	RS232
Output	Ethernet
DC In	DC +9V to +24V
Power consumption	1000 mA
Operating Temp.	-20 to 65°C
Operating Humidity	0-90 % Non-Condensing
Baud Rate	110 bps to 230.4 kbps
Data Bits	5, 6, 7 or 8
Stop Bits	1, 1.5 or 2
Parity	None, Even, Odd, Mark, Space
Flow Control	None, RTX/CTS, XON/XOFF, DTR/DSR

800.210.2172 or 888.987.2446 toll free • 405.948.9222 fax  
 4211 N. Barnes Ave. • Oklahoma City, OK 73112  
 301 Goolsby Blvd. • Deerfield Beach, FL 33442